

our
SOMERSET

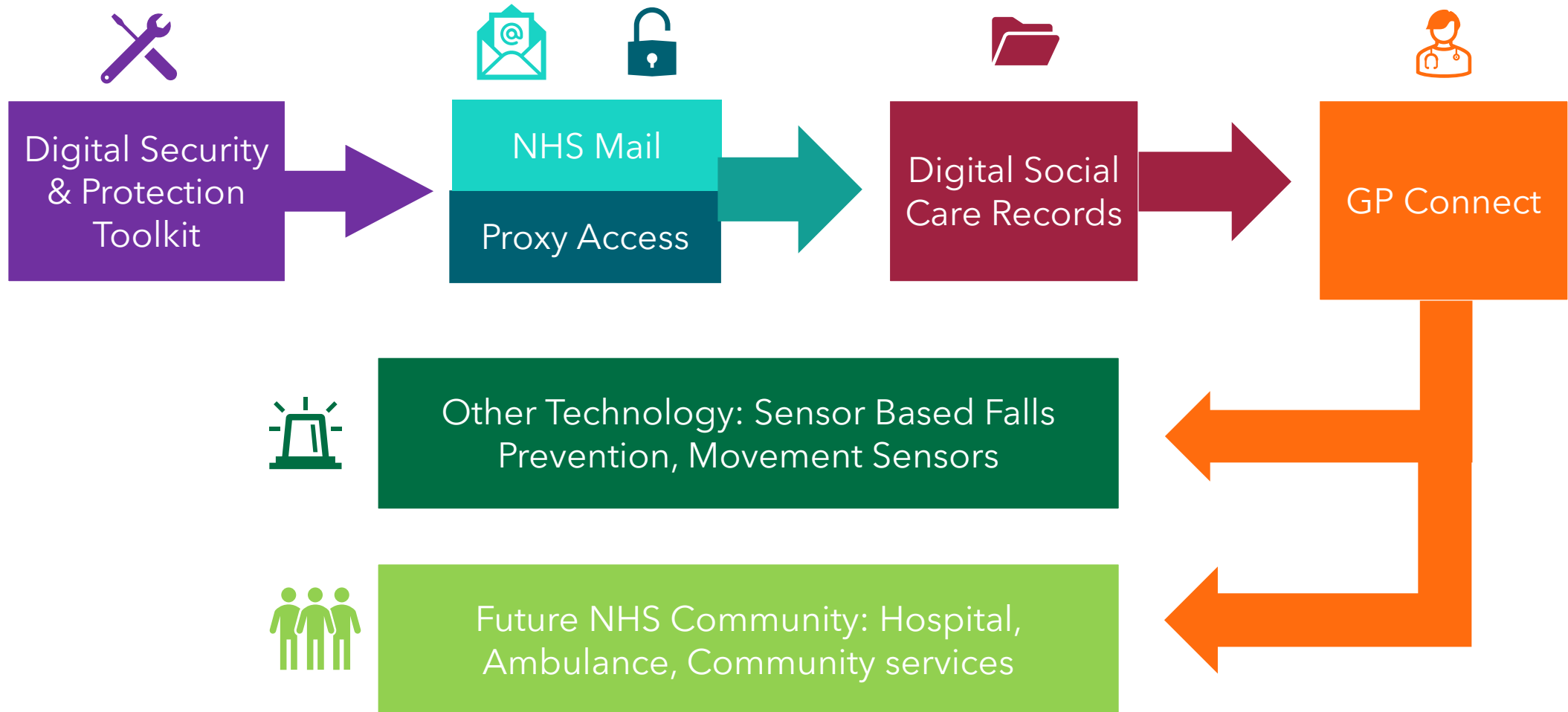
Your Digital Journey

from the DiSC Team



Somerset
Council

Your Digital Journey



Step One

Your Digital Journey



RCPA is the local support organisation for the DSPT – please get in touch for any support you need for completing and republishing the DSPT. The support is completely free and can be delivered online or in-person.

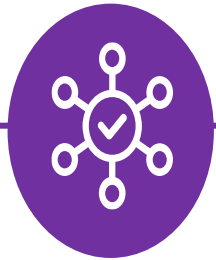
Data Security & Protection Toolkit (DSPT)



The first step on your digital journey is to register and publish your DSPT



An online self-assessment of your organisation's data security



Demonstrates compliance with data protection legislation & contractual agreements



Gives advice and is a checklist of good practice



Reviewed annually

Data Security & Protection Toolkit (DSPT)

Benefits of completing the DSPT



Evaluates and improves your data and cyber security



Helps reduce the risk of data breaches



Reassures services users, their families and staff that you manage their data safely



Recognised and recommended by CQC for data security compliance

Data Security & Protection Toolkit (DSPT)

Completing the DSPT



4 sections

- * Staffing and Roles *
- * Policies and Procedures *
- * Data Security *
- * IT Systems and Devices *

Approaching Standards
Level 1

26 questions

Standards Met
Level 2

16 questions

Step Two

Your Digital Journey



NHS
Somerset
Digital Outreach Team (DOTs)



NHSMail is a fundamental part of becoming a digital care provider – it is a prerequisite for many things including DSCR and Proxy Access.

- Security Guarantee
- NHS Directory
- Microsoft Teams access
- Ability to get Proxy Access
- Ability to get DISC

What is NHSmail?

NHSmail



NHSmail is a secure email service for sharing confidential information. COVID highlighted need for wider usage of a secure email – making NHSmail a priority for DOTS

CQC registration is also necessary – including having an email address registered with them.

Key Benefits of NHSmail:

- Security
- Time saved
- Access to various things (presently and going forward)

What is Proxy Access?



Proxy access was developed to allow someone other than the patient to access and manage parts of their GP online services account.

The proxy is given their own online access account (rather than using the patient's login details).



GP practices can set up proxy access to repeat medications only, meaning that care home staff can't see anything else in the record.

If, however, a resident does not want care home staff to have proxy access to *any* part of their record, including repeat medication, the care home must continue using a paper-based process.



When staff in the care home are given proxy access by the GP practice, they can:

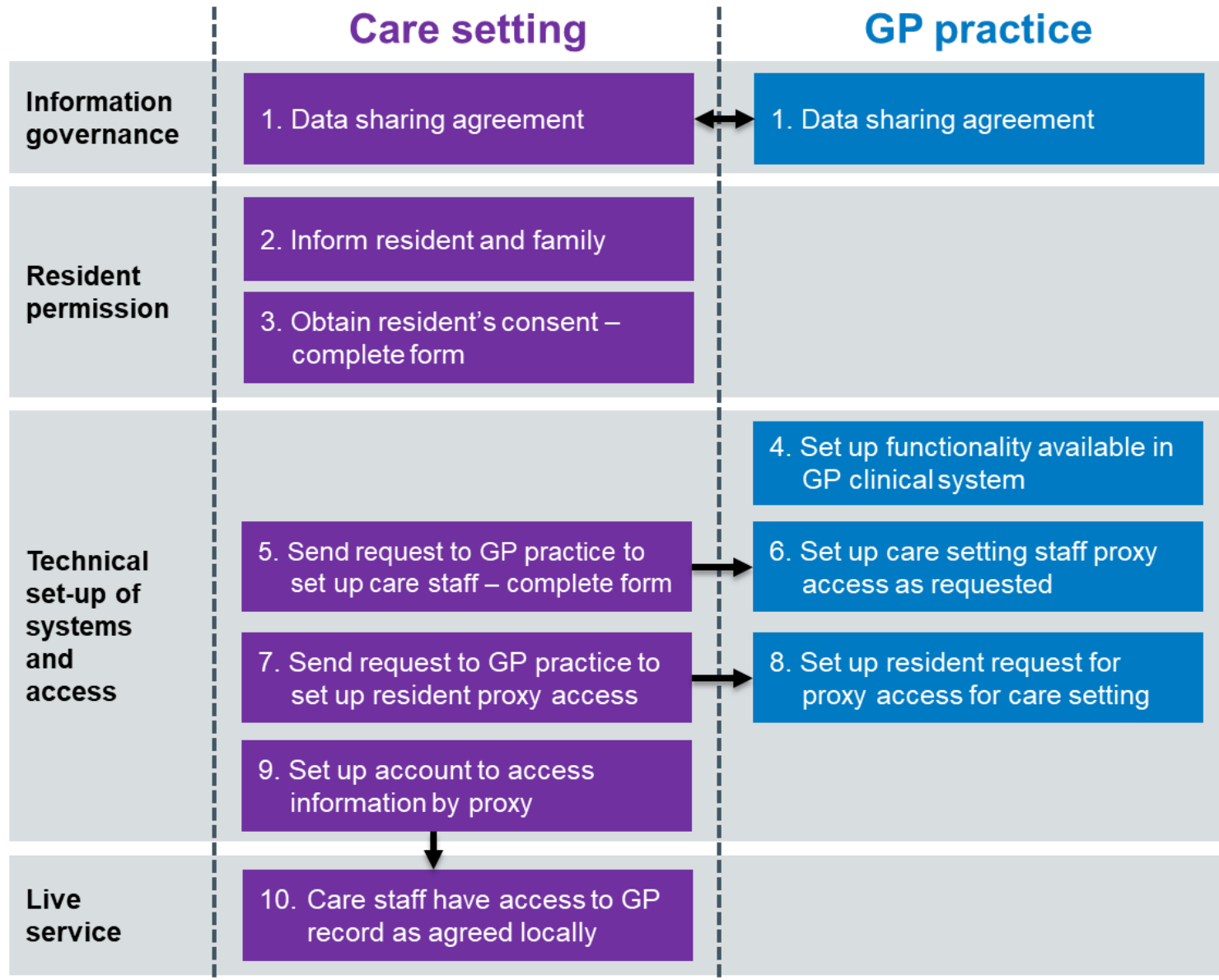
- order repeat prescriptions
- include a note to the GP regarding a change in medication requirements.



Proxy Access allows medication orders to be processed digitally, saving time and effort.

Also, necessary to move away from being paper-based - CQC trying to encourage proxy access too.

How to set up Proxy Access?



To summarise

Proxy Access

NHSmail



NHSmail can . . .

- Benefit staff and care recipients.
- Reduced admin times allowing for increased face-to-face care.
- Internal and external security measures protect Patient Identifiable Data.

Along with these benefits, it enables access to other benefits and services, such as DISC or Proxy Access.

Proxy Access also helps to reduce admin time, increases security, reduces paper waste and creates an audit trail – increasing transparency.

Step Three

Your Digital Journey



What is a digital social care record?
DSCR

ASSURED SOLUTIONS

access

birdie

Carebeans

careberry

Carecontrol

CareVision
Less Admin, More Caring

CareLineLive

Cura Systems
Cura means Care

DOM PORTAL

fusion
core solutions ltd

iplanit

Log my Care

KareInn

nourish

onetouch
we care more

PASS
powered by everyLIFE

Person Centred Software

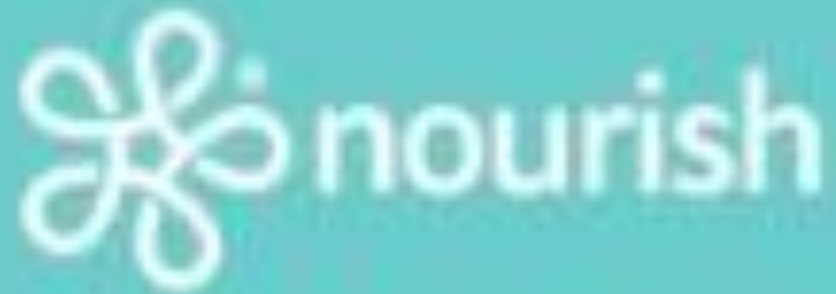
Qwikify

SEKOiA

Somerset Council

our SOMERSET

An introduction to DSCR



Nourish is a popular DSCR choice in Somerset, others are available.

DSCR in action in Somerset



Benefits feedback

Staff & Managers

“ It speeds up every part of the process from pre-admission to daily notes, nutrition monitoring and discharge.

Care plans are now at our fingertips

System is very popular, intuitive, quick to complete. Staff really like the mobile interface and Near Field Communication (one touch log system) technology.

Improved falls data, more personalised care plans and useful to have access from home.”

Data entry times for DSCR are going down from **45 minutes** per resident per day to **18 minutes** per resident per day.

What are staff saying?

“ Quick to complete
Intuitive
More personalised care plans
Secure access
Speech to text is a revelation ”

We went digital !

Stories from staff

I personally like our new system, everything I need to know about a residents care needs and wellbeing are quick to find by the press of a button.

I'm happy to use the new system. Every day I am learning new things and getting more confident.



DSCR provides more elaborate documents

It gives us more time with each resident and allows us to input more information.

I now provide more information



[HYPERLINK](#)

Scan this barcode or click the hyperlink to express your interest in a digital social care record

We went digital !

Our DSCR story



We wanted a new system to document our care notes quickly and easily categorise them.

We found a DSCR supplier we liked and we applied for grant funding support through the council.



We have gone live and now it only takes 5 minutes to review daily care actions! It is the easiest way to document everything about residents. I like using our new system and it feels professional.



[HYPERLINK](#)

Scan this barcode or click the hyperlink to express your interest in a digital social care record

Step Four

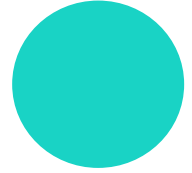
Your Digital Journey



GP Connect

From January 2024 all assured solution DSCR's will have GP Connect.

It's a core part of the DSCR system, and so any provider who chooses an assured supplier will be able to eventually access GP connect free of charge as part of their system.



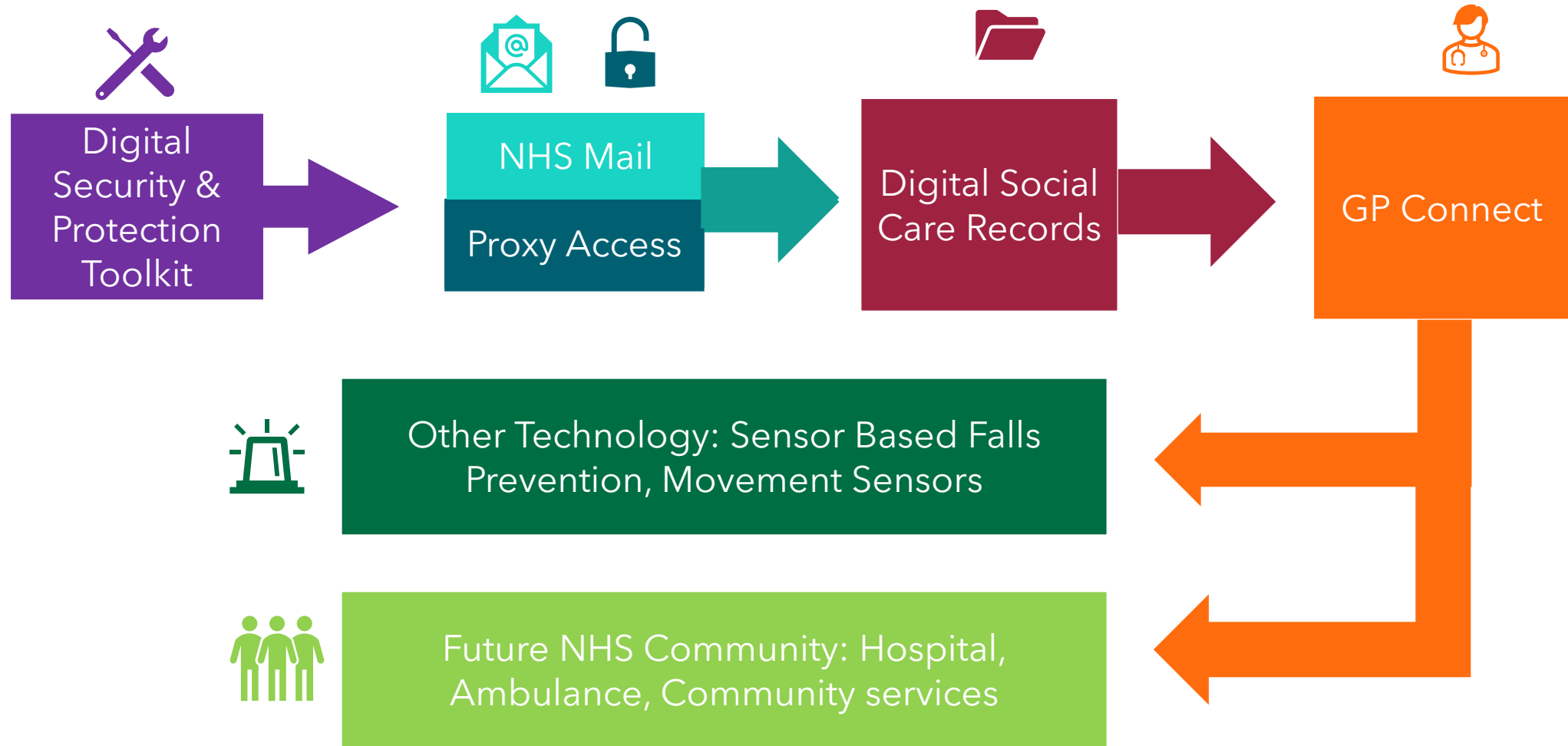
GP connect supports nonclinical roles listed below to have tailored access to GP medical records for people in their care using GP connect.

- Registered manager / Care Manager
- Deputy Home Manager / Deputy Care Manager / Senior Carer /Team Leader
- Pharmacist / Pharmacy technician
- Social worker
- Nurse

This view of the GP record includes

- Summary covering the last 3 encounters, active problems & issues free text notes are viewable.
- Allergies and adverse reactions
- Current Medications
- Immunisations

Your Digital Journey - Next Steps



Sensor Based Falls Detection & Prevention

- Reduce the frequency and severity of incidents such as falls or medication errors leading to hospital admissions
- Give care staff more time to spend on other tasks interacting with people and delivering personalised care
- **Grant Funding available NOW**
- **100% of 1st years costs.** Capped at £500 per user.
- Must be **acoustic**

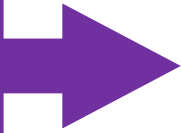


Future NHS & ASC Community

- Long term goals for interoperability.
- Shared care records strategy
- Joint health and social care system
- Brave AI - a health warning system

- Reach out to shared care record team in the ICS

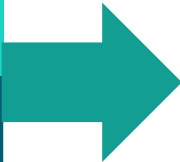
Digital Security & Protection Toolkit



Dan Plummer
Project Delivery Officer

admin@rcpa.org.uk

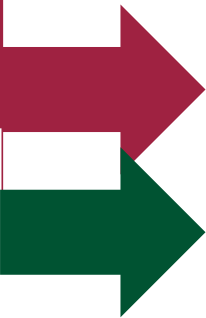
NHS Mail
Proxy Access



Joe Stapleforth & Beth Mee
Digital Outreach Team

somicb.digitalcarehomes@nhs.net

Digital Social Care Records
Sensor Based Falls Prevention



DiSC Funding Team
Jo Jones
Maria Tutton

[Digitisation in Social Care \(DiSC\) - Expression of Interest Form \(office.com\)](#)

Digitisationinsocialcare@somerset.gov.uk



We will help you on your digital journey.

Your Digital Journey

